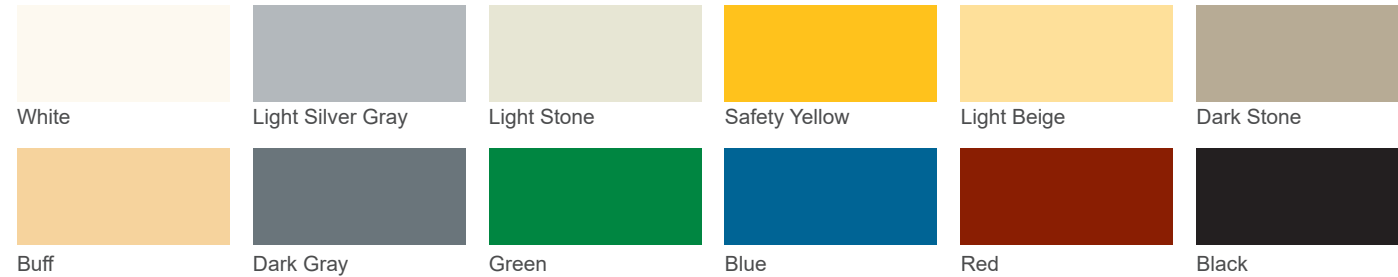


Protecting and preserving your structure also includes enhancing its aesthetic value. MasterSeal Fast Cure Traffic Systems has a variety of topcoat colors and quartz aggregate blends available to make your project stand out.

MasterTop® PGM 155 Colors

(For use in MasterTop MMA based flooring systems)



MasterTop® SRS Quartz Aggregate Blends



Contact us to learn more or visit:
master-builders-solutions.com/en-us/products/deck-coatings

Master Builders Solutions

The Master Builders Solutions brand brings all of MBCC-Groups expertise together to create chemical solutions for new construction, maintenance, repair and renovation of structures. Master Builders Solutions is built on the experience gained from more than a century in the construction industry.

The know-how and experience of a global community of MBCC-Group construction experts form the core of Master Builders Solutions. We combine the right elements from our portfolio to solve your specific construction challenges. We collaborate across areas

of expertise and regions and draw on the experience gained from countless construction projects worldwide. We leverage global MBCC-Group technologies, as well as our in-depth knowledge of local building needs, to develop innovations that help make you more successful and drive sustainable construction. The comprehensive portfolio under the Master Builders Solutions brand encompasses concrete admixtures, cement additives, chemical solutions for underground construction, waterproofing solutions, sealants, concrete repair and protection solutions, performance grouts and performance flooring solutions.

Master Builders Solutions US

889 Valley Park Drive
 Shakopee, MN 55379 USA

Customer Service (800) 433-9517

Technical Service (800) 243-6739

master-builders-solutions.com/EN-US

LIMITED WARRANTY NOTICE: Master Builders Solutions US warrants this product to be free from manufacturing defects and to meet the technical properties on the current Technical Data Guide, if used as directed within shelf life. Satisfactory results depend not only on quality products but also upon many factors beyond our control. Master Builders Solutions US MAKES NO OTHER WARRANTY OR GUARANTEE, EXPRESS OR IMPLIED, INCLUDING WARRANTIES OF MERCHANTABILITY OR FITNESS FOR A PARTICULAR PURPOSE WITH RESPECT TO ITS PRODUCTS. The sole and exclusive remedy of Purchaser for any claim concerning this product, including but not limited to, claims alleging breach of warranty, negligence, strict liability or otherwise, is shipment to purchaser of product equal to the amount of product that fails to meet this warranty or refund of the original purchase price of product that fails to meet this warranty, at the sole option of Master Builders Solutions US. Any claims concerning this product must be received in writing within one (1) year from the date of shipment and any claims not presented within that period are waived by Purchaser. Master Builders Solutions US WILL NOT BE RESPONSIBLE FOR ANY SPECIAL, INCIDENTAL, CONSEQUENTIAL (INCLUDING LOST PROFITS) OR PUNITIVE DAMAGES OF ANY KIND.

Purchaser must determine the suitability of the products for the intended use and assumes all risks and liabilities in connection therewith. This information and all further technical advice are based on Master Builders Solutions US's present knowledge and experience. However, Master Builders Solutions US assumes no liability for providing such information and advice including the extent to which such information and advice may relate to existing third party intellectual property rights, especially patent rights, nor shall any legal relationship be created by or arise from the provision of such information and advice. Master Builders Solutions US reserves the right to make any changes according to technological progress or further developments. The Purchaser of the Product(s) must test the product(s) for suitability for the intended application and purpose before proceeding with a full application of the product(s). Performance of the product described herein should be verified by testing and carried out by qualified experts.

MasterSeal® Fast Cure Traffic Systems

MasterSeal 2850 and MasterSeal 2900

MasterSeal® Fast Cure Traffic Systems

MasterSeal 2850 and MasterSeal 2900

When your traffic bearing area requires exceptional protection with fast return to service, MasterSeal Fast Cure Traffic Systems from Master Builders Solutions are precisely what you need.

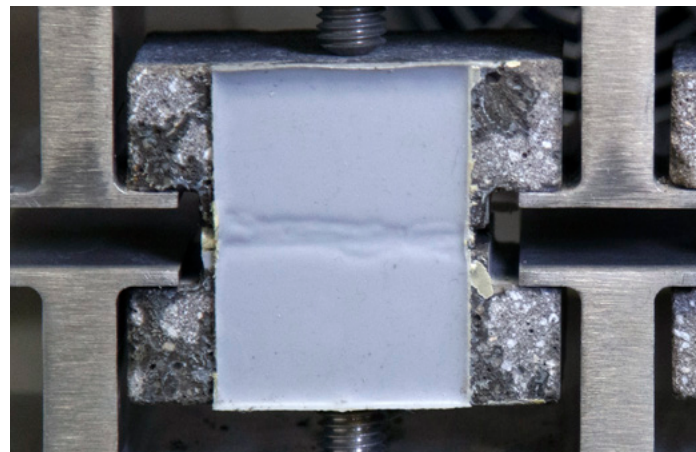
There are two waterproofing systems in the MasterSeal Fast Cure Traffic Systems family - MasterSeal 2850 and MasterSeal 2900. They're both based on cutting edge innovation that incorporates the best of methyl methacrylate and polyurethane technologies. The ability to choose from two systems provides you with flexible options to open your structure to traffic in just one hour after installation, depending on the system selected.

The effectiveness of MasterSeal 2850 and MasterSeal 2900 starts with a tenacious adhesion at the bond line to the concrete deck that continues throughout the system, resulting in

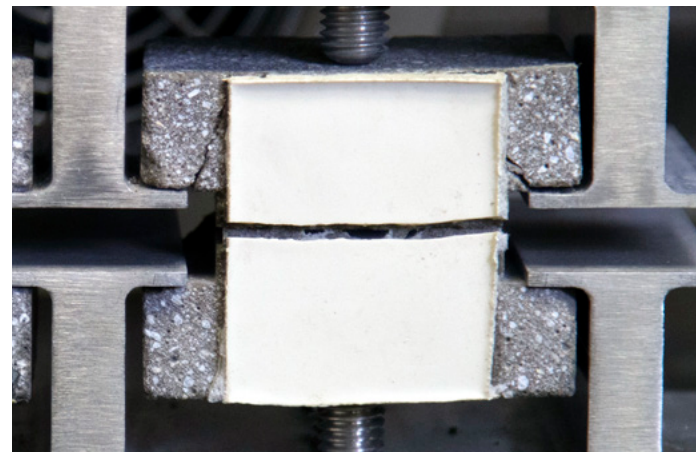
chemically bonded coats with no inter-coat delamination. As a function of their technology, these systems provide outstanding long-term durability combined with unmatched crack bridging capabilities and can be applied at temperatures as low as 20°F.

At Master Builders Solutions, we've leveraged over 30 years of proven performance in methyl methacrylate and polyurethane technologies to create MasterSeal Fast Cure Traffic Coatings. A variety of pigments and color quartz aggregate blends are available to enhance the aesthetic effects of your MasterSeal 2850 and MasterSeal 2900 installations.

Unmatched crack-bridging and waterproofing capabilities



MasterSeal 290FS Waterproofing Membrane



Other manufacturer's waterproofing membrane

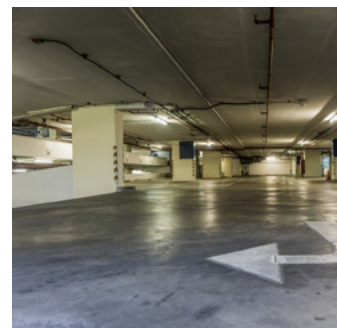
Application Recommendations



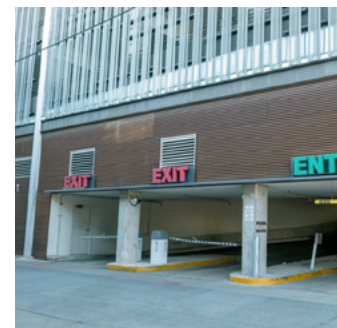
Parking Garages



Loading Docks



Parking Ramps



Entrance / Exits

System Components

MasterSeal 2850

- MasterSeal M 270NP
A two component primerless basecoat (polyurethane)
- MasterSeal TC 275
A two component intermediate coat (polyurethane)
- MasterSeal 900 series aggregate
Broadcast aggregate
- MasterSeal 299FS
A methyl methacrylate topcoat (MMA)
- MasterSeal 918
A powder hardener

MasterSeal 2900

- MasterSeal 280FS
A methyl methacrylate primer (MMA)
- MasterSeal 290FS
A hybrid MMA/polyurethane base coat (hybrid PU/MMA)
- MasterSeal 297FS
A methyl methacrylate intermediate coat (MMA)
- MasterSeal 900 series aggregate
Broadcast aggregate
- MasterSeal 299FS
A methyl methacrylate topcoat (MMA)
- MasterSeal 918
A powder hardener

Having two systems in the MasterSeal Fast Cure Traffic Systems family allows for flexibility when considering total project time. While both systems are fast curing MasterSeal 2850 can be opened to traffic in 2 hours after installation while MasterSeal 2900 can be opened to traffic in as little 1 hour after installation.



2 hrs

MasterSeal 2850

Total System Cure Time:
12 hours
Open to Traffic:
2 hours after installation

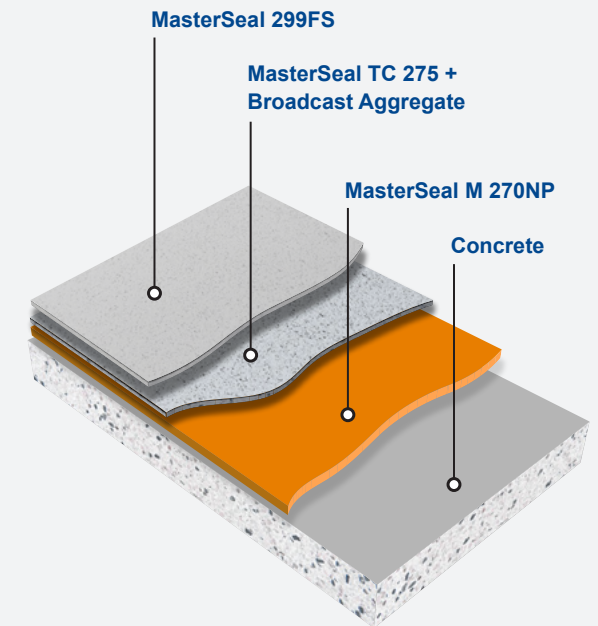


1 hr

MasterSeal 2900

Total System Cure Time:
4 hours
Open to Traffic:
1 hour after installation

MasterSeal® 2850



MasterSeal® 2900

